

Health & Safety Note:

- Refer to standard detail drawings 100 to 108 for additional health & safety notes
- The contractor should be familiar with the contents of the geo-environmental reports and protect against any risks that arise.
- The sub-contractor is responsible for obtaining copies of service and drainage record plans and taking all care to ensure that existing services are protected or disconnected
- All waste material should be placed in appropriate skips or removed from site to avoid trip hazards
- The following items require method statements:-
- Any excavations including safe access and support
- Working in confined spaces
- Working in or adjacent to the public highway
- Working in or connecting to live sewers
- Working near live or overhead services
- Protection to trees and landscaping
- Handling & erection of all steelwork, precast concrete units & pad stones & any units greater than 20kg in weight.
- Protection from risk of fall into all excavations and from exposed faces (including floor slabs) where changes in level where falls could cause an injury

Adoptable Roads



Tactile Crossing



Road Nameplate

Sewers and Drains

Existing Public foul sewer

Existing Public foul sewer

Adoptable foul sewer

Existing Public Surface Water Sewer

Adoptable Surface Water Sewer

Adoptable Highway Drain or Gully Connection

Events of Drainage Easements.

Storm

Foul

Manholes and Chambers

Precast Concrete Manhole (Type 1A or 2B)

Rectangular Precast Concrete Manhole (Type 3)

Inspection Chamber - Max. Depth 3m (Type 3)

Inspection Chamber - Max. Depth 2m (Type 4)

Distance Assemblies

Adoptable Road Gully

Yard and Bottle gully

Channel drain

Channel drain

Channel drain

Channel drain

Channel drain

Channel drain

Channel drain

Channel drain

Channel drain

Channel drain

Channel drain

Channel drain

Channel drain

Channel drain

Channel drain

Channel drain

Channel drain

Channel drain

Channel drain

Channel drain

Channel drain

Channel drain

Channel drain

Channel drain

Channel drain

Channel drain

Channel drain

Channel drain

Channel drain

Channel drain

Channel drain

Channel drain

Channel drain

Channel drain

Channel drain

Channel drain

Channel drain

Channel drain

Channel drain

Channel drain

Channel drain

Channel drain

Channel drain

Channel drain

Channel drain

Channel drain

Channel drain

Channel drain

Channel drain

Channel drain

Channel drain

Channel drain

Channel drain

Channel drain

Channel drain

Channel drain

Channel drain

Channel drain

Channel drain

Channel drain

Channel drain

Channel drain

Channel drain

Channel drain

Channel drain

Channel drain

Channel drain

Channel drain

Channel drain

Channel drain

Channel drain

Channel drain

Channel drain

Channel drain

Channel drain

Channel drain

Channel drain

Channel drain

Channel drain

Channel drain

Channel drain

Channel drain

Channel drain

Channel drain

Channel drain

Channel drain

Channel drain

Channel drain

Channel drain

Channel drain

Channel drain

Channel drain

Channel drain

Channel drain

Channel drain

Channel drain

Channel drain

Channel drain

Channel drain

Channel drain

Channel drain

Channel drain

Channel drain

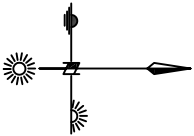
Channel drain

Channel drain

Channel drain

Channel drain

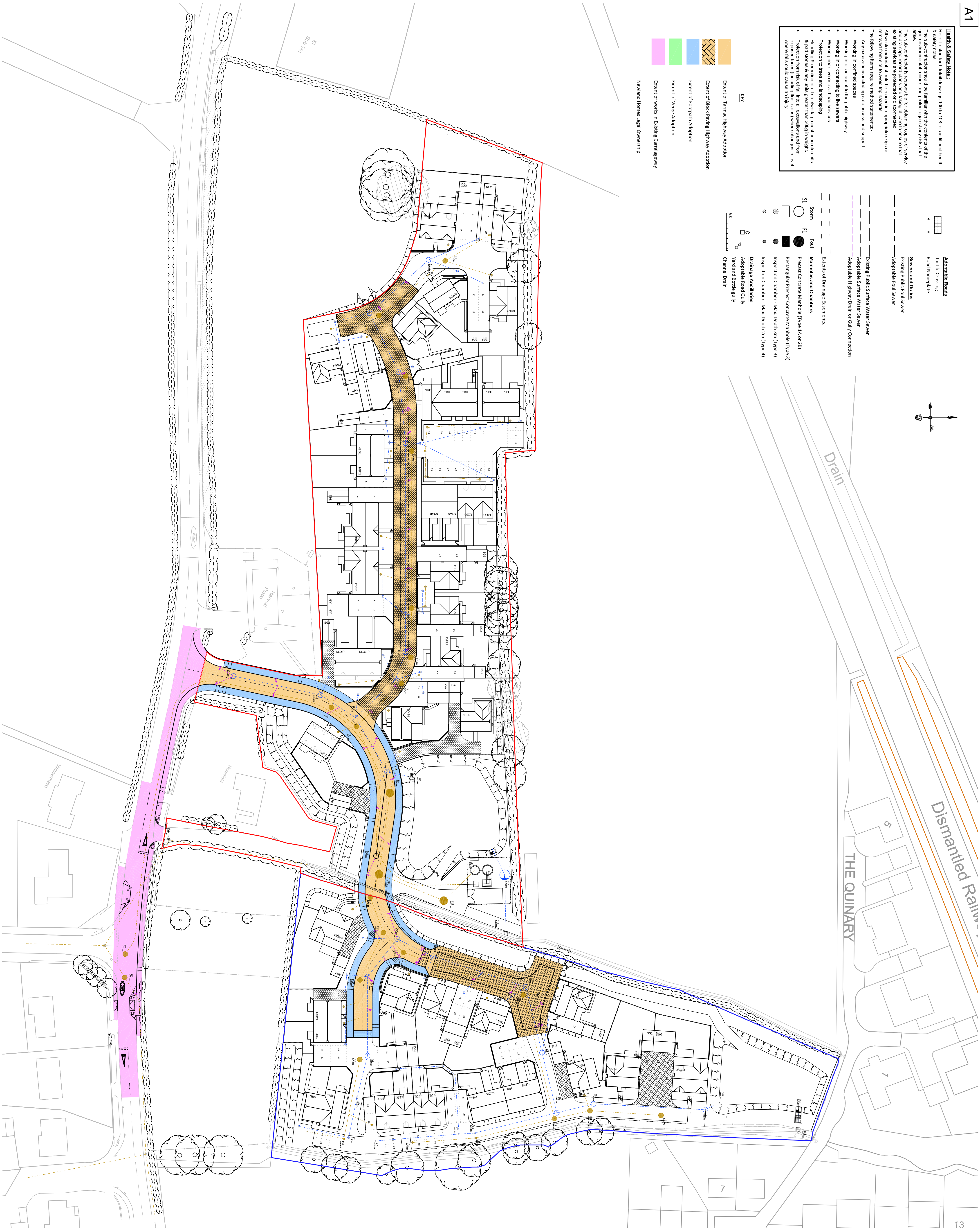
Channel drain



Dismantled Railway

THE QUINRY

Drain



DO NOT SCALE FROM THIS DRAWING.

All dimensions to be checked on site prior to construction of precast concrete items. Any discrepancy or error in the drawing shall be the responsibility of the client. The contractor shall be responsible for ensuring that the drawing is used in accordance with the relevant standards and specifications. The contractor shall be responsible for ensuring that the drawing is used in accordance with the relevant standards and specifications.

© 2015 Newland Homes Ltd

1. All levels relate to Ordnance Datum.
2. For adoptable roads and sewer details refer to drawing 101 to 130.
3. For external works finishes refer to drawing 141.
4. For finished level details refer to drawing 143.
5. For construction details to private areas refer to drawings 151 to 156.

ADAPTABLE DRAINAGE NOTES

6. All drainage connections of sewers shall be in accordance with Sewers for Adoption 7th Edition, a design and construction guide for developers, the Civil Engineering Specification for the Water Industry 6th Edition.
7. All type 1A & 2B manholes should have a concrete surround pointed with resin modified mortar.
8. Manhole covers & frames shall be ductile iron with a minimum square opening of 675x675mm. Covers shall be double triangle for 675mm square openings and be provided with loose bolted connections. Frame depth shall be 150mm.
9. The use of ladders or steps in manholes, wet wells and valve chambers shall comply with the following: Mild steel plastic encapsulated manhole single steps shall not be used in manholes or a greater depth than 1.0m. Mild steel plastic encapsulated ladders shall be provided in accordance with BS4211 in manholes between 3.0 to 6.0m deep.
10. Hot dipped galvanized mild steel ladders should be installed in type 1A manholes.
11. Proposed adoptable sewers are only permitted to have other services installed in the same trench as the sewer, provided the clearance is in excess of 300mm.
12. All pipework to be kite marked by BS1 or certified by equal inspection authority.
13. Red coloured plastic marker pipe at least 150mm wide shall be laid at a minimum of 200mm above the soffit of the pipe. The pipe shall be marked with the words 'SEWER' in red letters throughout its length and at intervals not exceeding 700mm and shall incorporate a corrosion resistant tracing system for non-metallic pipes.
14. All CLAY pipework is to be Extra Strength Verified Clayware to BS EN295.
15. All PLASTIC pipework is to be Thermoplastic Structured Wall pipe to BS EN12476 Part 1 and 2 or 3, stamped SNG, no longer than 3m and if found deformed by more than 6% are to be replaced.
16. All CONCRETE pipework is to be Class M Freabloc Jointed Concrete Pipework to BS 5911: Part 100.
17. All pipework is to have a Class 5 Granular Bed and Surround unless indicated as Concrete Surround.
18. First manhole upstream from the connection point to the public sewer to be filled with a temporary debris screen to prevent debris entering public sewer. Screen to be removed prior to occupation of dwellings.
19. Building Drainage to adoptable manholes from private building drainage to be 150mm diameter pipes unless otherwise specified.
20. All house drainage to be 100mm dia unless otherwise stated, and laid in accordance with current Building Regulations and BS8301: 1995.
21. Pipes are to be either extra strength vitrified clay to BS EN295: Part 1 with flexible joints, or P.V.C. complying with the relevant provisions of BS4600, or BS3480 and kilnmark certified.
22. Pipe bedding material is to be Class 5 with 100mm minimum thickness surround. Bed thickness to be increased to 150mm in rocky ground. Granular material to be 10mm nominal size.
23. Where pipes are beneath drives or parking courts and less than 500mm depth to soffit, the pipe bedding shall be minimum 100mm Concrete Surround.
24. Backfill is to be with selected fill free of stones larger than 40mm, lumps of clay over 100mm, timber, frozen material and vegetable matter.
25. Pipes entering and leaving manholes/inspection chambers shall include a rocker pipe, 600mm in length.
26. Brickwork to chambers shall be Class B Engineering to BS3921.

REV	DATE	INITIAL
1	10.02.16	BJ
2	10.02.16	BJ



Colin Lane,
Willersey
S38 Agreement Plan

1:500 @ A1
209 - 101

BJ
10.02.16
First Issue